



# Sheringham Shoal and Dudgeon Offshore Wind Farm Extension Projects

Environmental Statement

## Volume 2

### Chapter 26 - Landscape and Visual Impact Assessment

August 2022

Document Reference: 6.2.26

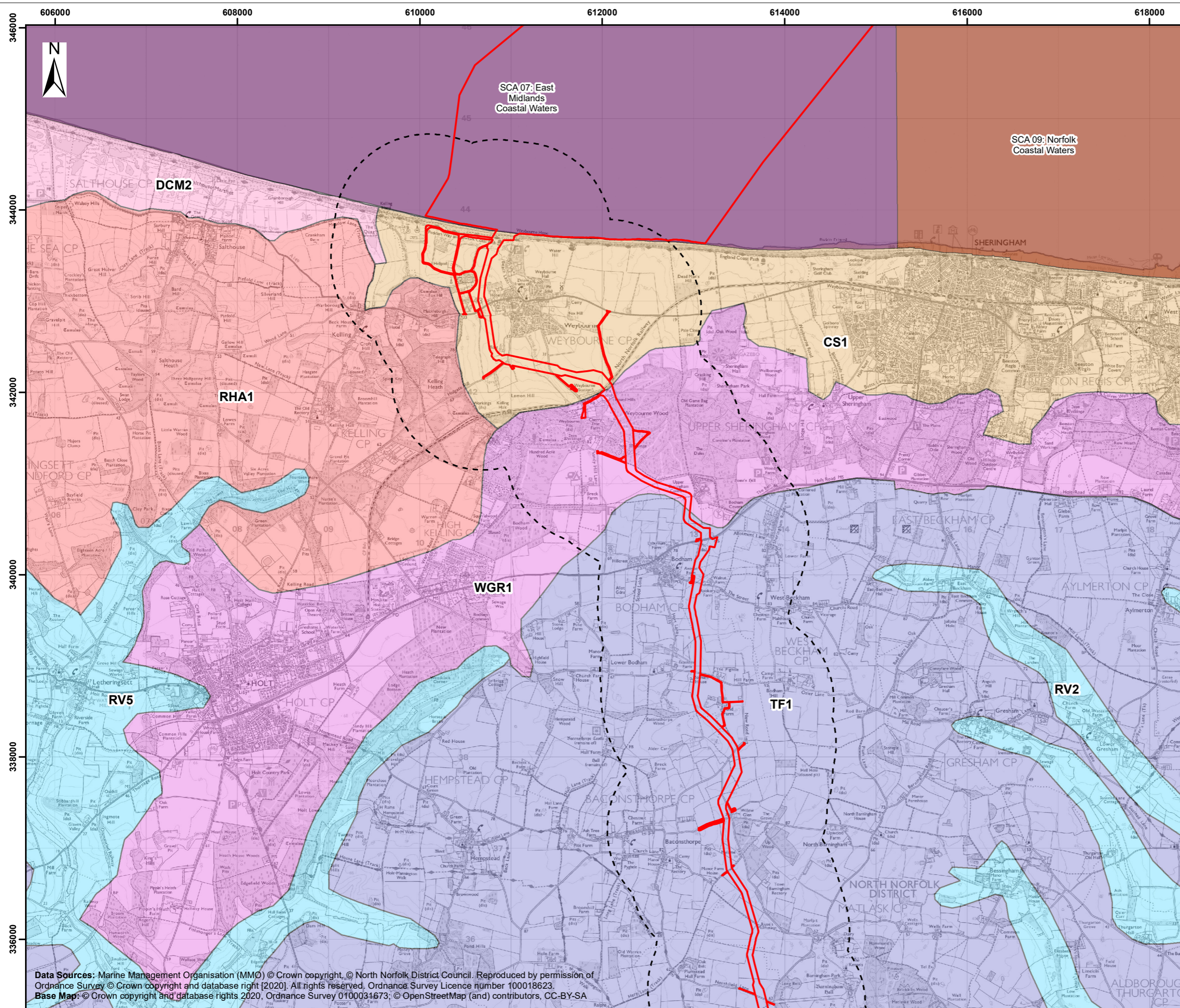
APFP Regulation: 5(2)(a)

Title: <b>Sheringham Shoal and Dudgeon Offshore Wind Farm Extension Projects                  Environmental Statement (Volume 2)                  Chapter 26: Landscape and Visual Impact Assessment Figures (Part 3 of 20)</b>	
PINS Document No.: 6.2.26	
Document No.: C282-RH-Z-GA-00004	
Date: <b>August 2022</b>	
Classification: <b>Final</b>	
Prepared by: <b>Royal HaskoningDHV</b>	
Approved by: <b>Sarah Chandler, Equinor</b>	
Date: August 2022	

### List of Figures

- 26.8: Local Landscape Character (Sheet 1 of 6)
- 26.9: Local Landscape Character (Sheet 2 of 6)
- 26.10: Local Landscape Character (Sheet 3 of 6)
- 26.11: Local Landscape Character (Sheet 4 of 6)
- 26.12: Local Landscape Character (Sheet 5 of 6)
- 26.13: Local Landscape Character (Sheet 6 of 6)





# Sheringham Shoal and Dudgeon Extension Projects

Title: Figure 26.8  
Local Landscape Character  
Sheet 1 of 6

Document: Environmental Statement (ES)  
Chapter 26 Landscape and Visual Impact Assessment

Application Doc. no.: 6.2.26

- Legend:
- Order Limits
  - 1km study area from Order Limits (onshore)
- East Inshore and East Offshore Seascape Character Assessment
- SCA 07: East Midlands Coastal Waters
  - SCA 09: Norfolk Coastal Waters
- North Norfolk Landscape Character Assessment
- DCM2. Blakeney, Wiveton, Cley and Salthouse Drained Marshes
  - CS1. Weybourne to Mundesley Coastal Shelf
  - RV2. River Bure and tributaries; RV5. River Glaven and tributaries
  - TF1. North Norfolk Tributary Farmland
  - WGR1. Wooded Glacial Cromer Ridge
  - RHA1. Blakeney, Salthouse & Kelling



Coordinate Reference System: British National Grid  
Transformation WGS84: OSGB\_1936\_To\_WGS\_1984\_7

Scale: 1:40,000      Scale at size: A3

Equinor Doc. no.: C282-LD-Z-GA-00004  
RHDHV Doc. no.: PB8164\_LDA\_ZZ\_ON\_DR\_Z\_0043

REV	DATE	STATUS	DRW	CHK	APR
A	06/07/2022	First Issue	VW	NA	CG

Data Sources: Marine Management Organisation (MMO) © Crown copyright, © North Norfolk District Council. Reproduced by permission of Ordnance Survey © Crown copyright and database right [2020]. All rights reserved. Ordnance Survey Licence number 100018623.  
Base Map: © Crown copyright and database rights 2020, Ordnance Survey 0100031673; © OpenStreetMap (and) contributors, CC-BY-SA



608000 610000 612000 614000 616000 618000

# Sheringham Shoal and Dudgeon Extension Projects


Title: Figure 26.9  
Local Landscape Character

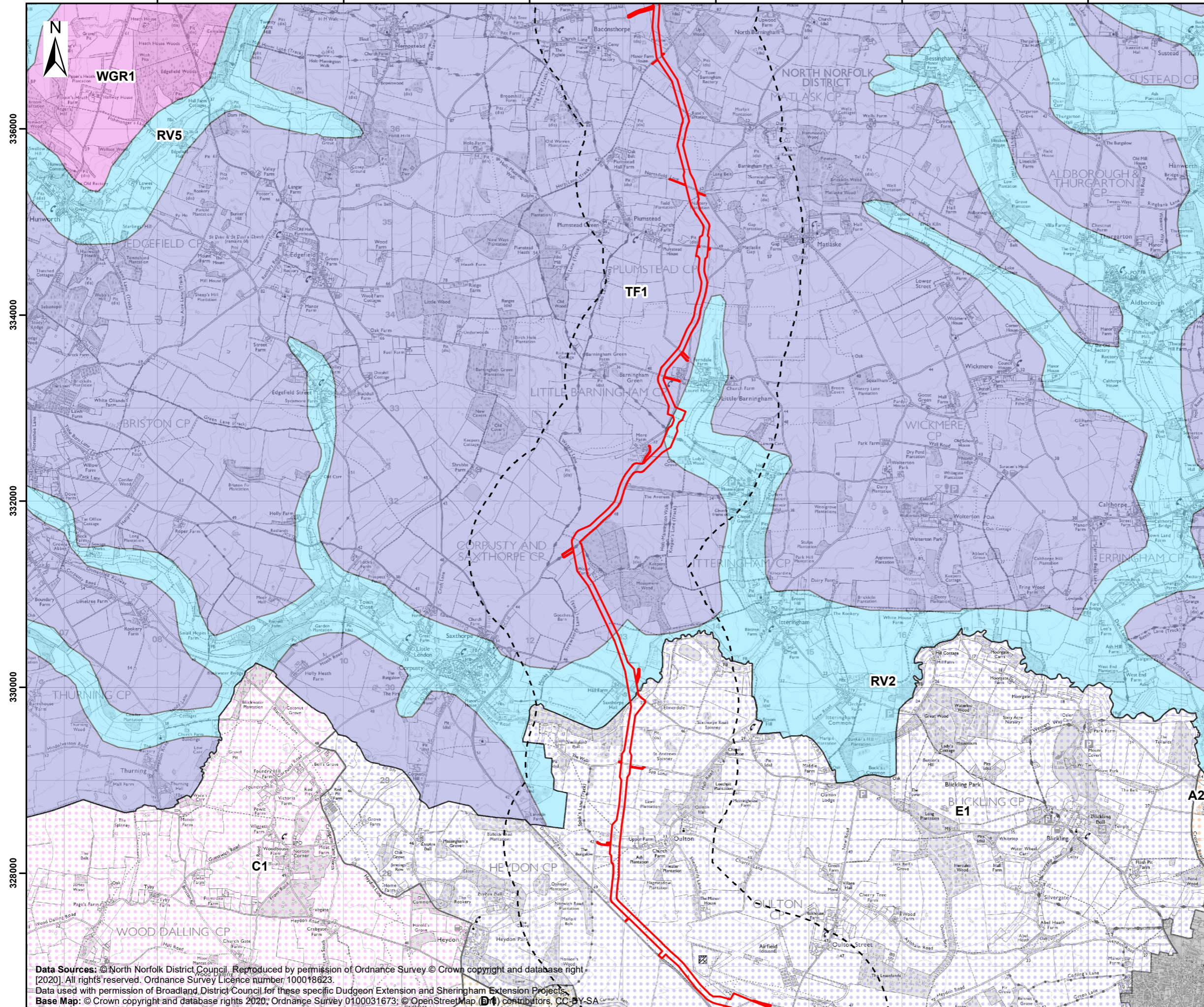
Sheet 2 of 6

Document: Environmental Statement (ES)  
Chapter 26 Landscape and Visual Impact Assessment

Application Doc. no.: 6.2.26

Legend:

-  Order Limits
-  1km study area from Order Limits (onshore)
- North Norfolk Landscape Character Assessment 2021**
  -  RV2. River Bure and tributaries; RV5. River Glaven and tributaries
  -  TF1. North Norfolk Tributary Farmland
  -  WGR1. Wooded Glacial Cromer Ridge
- Broadland Landscape Character Assessment 2013**
  -  A2. River Bure River Valley
  -  C1. Foulsham and Reepham Plateau Farmland
  -  D1. Cawston Tributary Farmland
  -  E1. Bickling and Oulton Wooded Estatelands
  -  Broadland (Urban)



Coordinate Reference System: British National Grid  
Transformation WGS84: OSGB\_1936\_To\_WGS\_1984\_7

0 1 2 km  
0 0.65 1.3 Miles

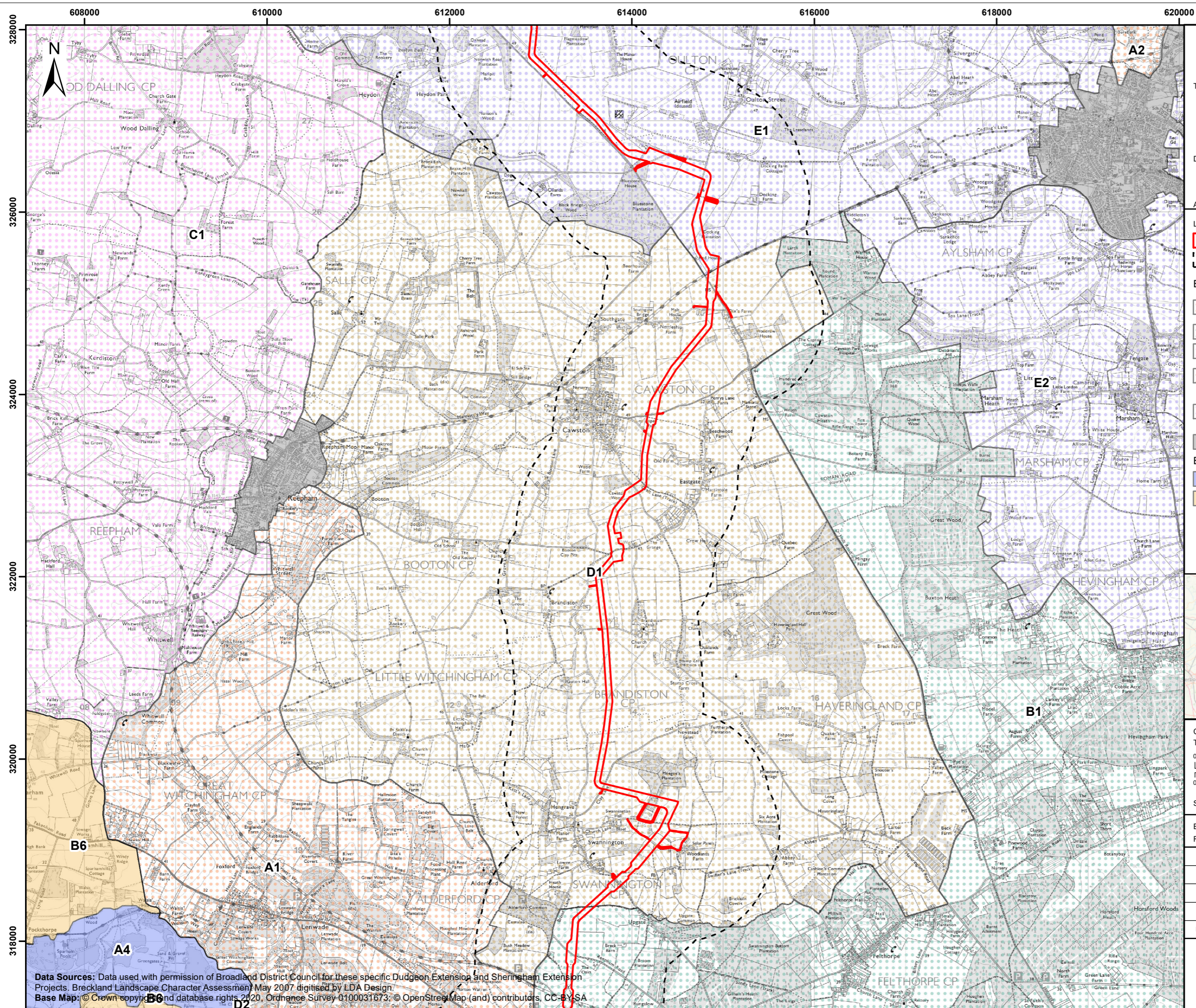
Scale: 1:40,000 Scale at size: A3

Equinor Doc. no.: C282-LD-Z-GA-00004  
RHDHV Doc. no.: PB8164\_LDA\_ZZ\_ON\_DR\_Z\_0044

A	06/07/2022	First Issue	VW	NA	CG
REV	DATE	STATUS	DRW	CHK	APR

Data Sources: © North Norfolk District Council. Reproduced by permission of Ordnance Survey © Crown copyright and database right [2020]. All rights reserved. Ordnance Survey Licence number: 100018623.  
Data used with permission of Broadland District Council for these specific Dudgeon Extension and Sheringham Extension Projects.  
Base Map: © Crown copyright and database rights 2020. Ordnance Survey 0100031673; © OpenStreetMap (OSM) contributors, CC-BY-SA





# Sheringham Shoal and Dudgeon Extension Projects

Title: Figure 26.10  
Local Landscape Character  
Sheet 3 of 6

Document: Environmental Statement (ES)  
Chapter 26 Landscape and Visual Impact Assessment

Application Doc. no.: 6.2.26

- Legend:
- Order Limits
  - 1km study area from Order Limits (onshore)
- Broadland Landscape Character Assessment 2013
- A1. River Wensum River Valley; A2. River Bure River Valley
  - B1. Horsford Woodland Heath Mosaic
  - C1. Foulsham and Reepham Plateau Farmland
  - D1. Cawston Tributary Farmland; D2. Weston Green Tributary Farmland
  - E1. Blicking and Oulton Wooded Estatelands; E2. Marsham and Hainford Wooded Estatelands
  - Broadland (Urban)
- Breckland Landscape Character Assessment 2007
- A4. River Wensum and Blackwater
  - B6. River Wensum and Tud Tributary



Coordinate Reference System: British National Grid  
Transformation WGS84: OSGB\_1936\_To\_WGS\_1984\_7

0 1 2 km  
0 0.65 1.3 Miles

Scale: 1:40,000 Scale at size: A3

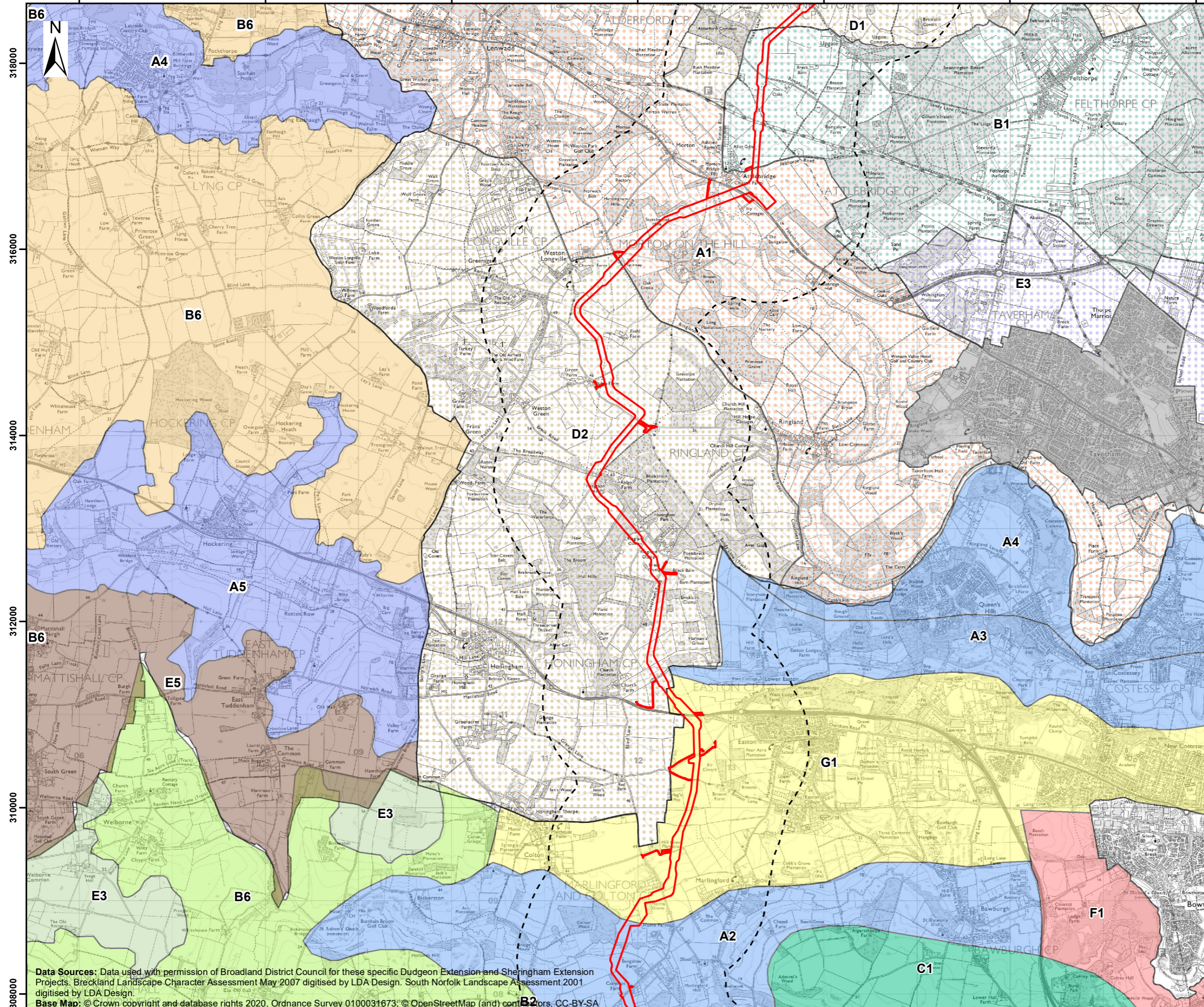
Equinor Doc. no.: C282-LD-Z-GA-00004  
RHDHV Doc. no.: PB8164\_LDA\_ZZ\_ON\_DR\_Z\_0045

REV	DATE	STATUS	DRW	CHK	APR
A	06/07/2022	First Issue	VW	NA	CG

Data Sources: Data used with permission of Broadland District Council for these specific Dudgeon Extension and Sheringham Extension Projects. Breckland Landscape Character Assessment May 2007 digitised by LDA Design.  
Base Map: © Crown copyright and database rights 2020, Ordnance Survey 0100031673; © OpenStreetMap (and) contributors, CC-BY-SA



606000 608000 610000 612000 614000 616000 618000



# Sheringham Shoal and Dudgeon Extension Projects

Title: Figure 26.11  
Local Landscape Character  
Sheet 4 of 6

Document: Environmental Statement (ES)  
Chapter 26 Landscape and Visual Impact Assessment

Application Doc. no.: 6.2.26

- Legend:**
- Order Limits
  - 1km study area from Order Limits (onshore)
- Broadland Landscape Character Assessment**
- A1. River Wensum River Valley
  - B1. Horsford Woodland Heath Mosaic
  - D1. Cawston Tributary Farmland; D2. Weston Green Tributary Farmland
  - E3. Spixworth Wooded Estatelands
  - Broadland (Urban)
- Breckland Landscape Character Assessment 2007**
- A4. River Wensum and Blackwater; A5. Upper
  - B6. River Wensum and Tud Tributary Farmland
  - E5. Central Breckland Plateau
- South Norfolk Landscape Assessment 2001**
- A2. Yare/Tiffany Rural River Valley; A3. Tud Rural River Valley; A4. Wesum Rural River Valley
  - B2. Tiffany Tributary Farmland; B6. Yare Tributary Farmland
  - C1. Yare Tributary Farmland with Parkland
  - E3. Hingham - Mattishall Plateau Farmland
  - F1. Yare Valley Urban Fringe
  - G1. Easton Fringe Farmland



Coordinate Reference System: British National Grid  
Transformation WGS84: OSGB\_1936\_To\_WGS\_1984\_7

0 1 2 km  
0 0.65 1.3 Miles

Scale: 1:40,000 Scale at size: A3

Equinor Doc. no.: C282-LD-Z-GA-00004  
RHDHV Doc. no.: PB8164\_LDA\_ZZ\_ON\_DR\_Z\_0046

A	06/07/2022	First Issue	VW	NA	CG
REV	DATE	STATUS	DRW	CHK	APR

**Data Sources:** Data used with permission of Broadland District Council for these specific Dudgeon Extension and Sheringham Extension Projects. Breckland Landscape Character Assessment May 2007 digitised by LDA Design. South Norfolk Landscape Assessment 2001 digitised by LDA Design.

**Base Map:** © Crown copyright and database rights 2020, Ordnance Survey 0100031673; © OpenStreetMap (and) contributors, CC-BY-SA





# Sheringham Shoal and Dudgeon Extension Projects




Title: Figure 26.12  
Local Landscape Character

Sheet 5 of 6


Document: Environmental Statement (ES)  
Chapter 26 Landscape and Visual Impact Assessment

Application Doc. no.: 6.2.26


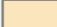

### Legend:

-  Order Limits
-  1km study area from Order Limits (onshore)
-  Onshore Substation Site 4km study area

### Broadland Landscape Character Assessment 2013

-  D2. Weston Green Tributary Farmland

### Breckland Landscape Character Assessment 2007

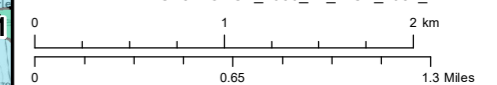
-  A2. Upper Yare
-  B4. River Blackwater Tributary Farmland
-  E5. Central Breckland Plateau

### South Norfolk Landscape Assessment 2001

-  A2. Yare/Tiffey Rural River Valley
-  B1. Tas Tributary Farmland; B2. Tiffey Tributary Farmland; B6. Yare Tributary Farmland
-  C1. Yare Tributary Farmland with Parkland
-  D1. Wymondham Settled Plateau Farmland
-  E1. Ashwellthorpe Plateau Farmland; E3. Hingham - Mattishall Plateau Farmland
-  F1. Yare Valley Urban Fringe
-  G1. Easton Fringe Farmland



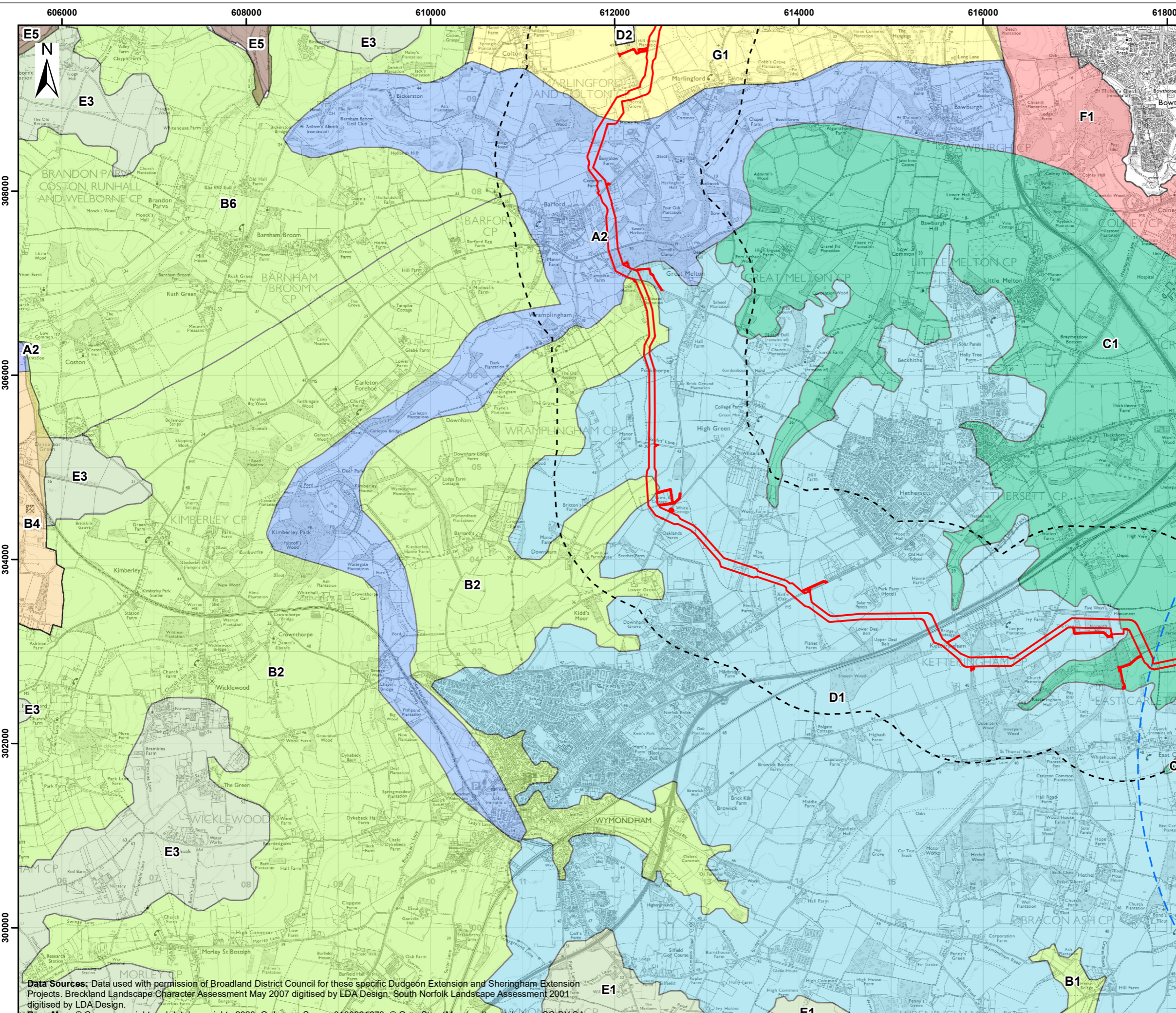
Coordinate Reference System: British National Grid  
Transformation WGS84: OSGB\_1936\_To\_WGS\_1984\_7



Scale: 1:40,000      Scale at size: A3

Equinor Doc. no.: C282-LD-Z-GA-00004  
RHDHV Doc. no.: PB8164\_LDA\_ZZ\_ON\_DR\_Z\_0047

REV	DATE	STATUS	DRW	CHK	APR
A	06/07/2022	First Issue	VW	NA	CG



Data Sources: Data used with permission of Broadland District Council for these specific Dudgeon Extension and Sheringham Extension Projects. Breckland Landscape Character Assessment May 2007 digitised by LDA Design. South Norfolk Landscape Assessment 2001 digitised by LDA Design.  
Base Map: © Crown copyright and database rights 2020, Ordnance Survey 0100031673; © OpenStreetMap (and) contributors, CC-BY-SA



# Sheringham Shoal and Dudgeon Extension Projects

Title: Figure 26.13  
Local Landscape Character

Sheet 6 of 6

Document: Environmental Statement (ES)  
Chapter 26 Landscape and Visual Impact Assessment

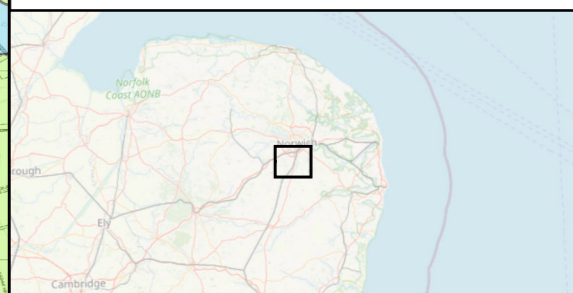
Application Doc. no.: 6.2.26

### Legend:

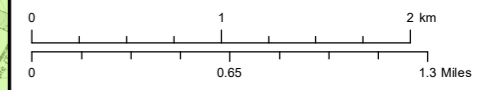
- Order Limits
- 1km study area from Order Limits (onshore)
- Onshore Substation Site
- Onshore Substation Site 4km study area

### South Norfolk Landscape Assessment 2001

- A1. Tas Rural River Valley
- B1. Tas Tributary Farmland; B3. Rockland Tributary Farmland; B5. Chet Tributary Farmland
- C1. Yare Tributary Farmland with Parkland
- D1. Wymondham Settled Plateau Farmland; D2. Poringland Settled Plateau Farmland
- E1. Ashwellthorpe Plateau Farmland; E3. Hingham - Mattishall Plateau Farmland
- F1. Yare Valley Urban Fringe



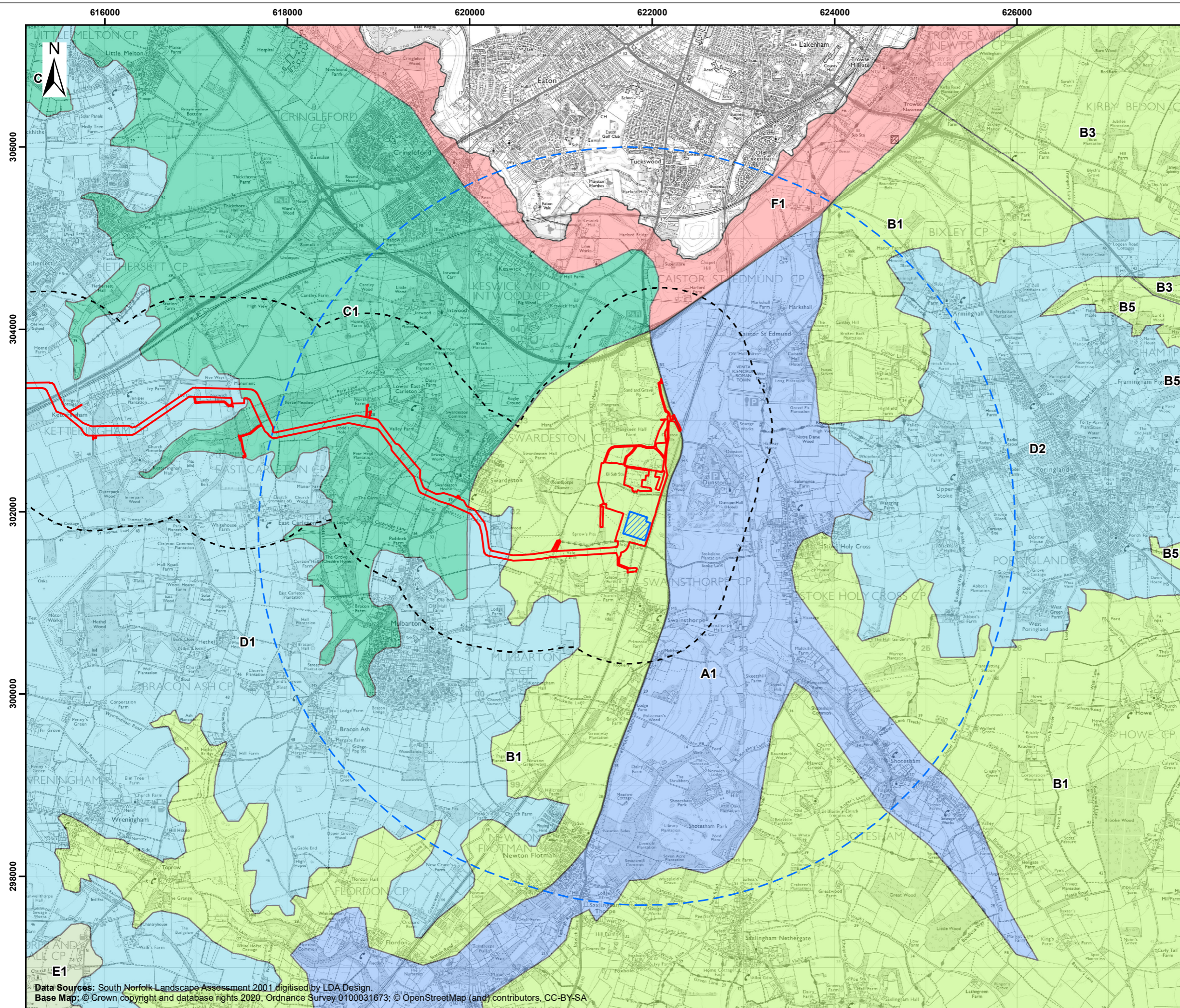
Coordinate Reference System: British National Grid  
Transformation WGS84: OSGB\_1936\_To\_WGS\_1984\_7



Scale: 1:40,000      Scale at size: A3

Equinor Doc. no.: C282-LD-Z-GA-00004  
RHDHV Doc. no.: PB8164\_LDA\_ZZ\_ON\_DR\_Z\_0048

A	06/07/2022	First Issue	VW	NA	CG
REV	DATE	STATUS	DRW	CHK	APR



Data Sources: South Norfolk Landscape Assessment 2001 digitised by LDA Design.  
Base Map: © Crown copyright and database rights 2020, Ordnance Survey 0100031673; © OpenStreetMap (and) contributors, CC-BY-SA